

**MAP OF BOWERS BEING A SUBDIVISION OF A PART OF DAVIS HOMES TRACT**

**10 ACRES**

Scale 1/4" = 100' Dec. 11/1913

Filed for record at the recorder's office on this 19th day of December, 1913 at 2.17 minutes P.M.

*H. Bowers*  
Recorder of Yolo County



This is to certify that this is a true and correct plat of the heretofore delineated survey as the same was surveyed and subdivided by me in August 1913. The roads No. 1 and No. 2 are dedicated to the public upon the acceptance and filing of this plat. The area of abutting lots is computed to the center of said roads, and all of the remaining roads and avenues are excluded from the heretofore delineated areas.

We the undersigned owners of and all persons whose consent is necessary to pass a clear title to the lands here-in described and subdivided, hereby acknowledge this to be the official map of said lands, and consent to the making thereof, and the highway shown are dedicated to public use.

*C. W. Bowers*  
Bank of Yolo, Cashier

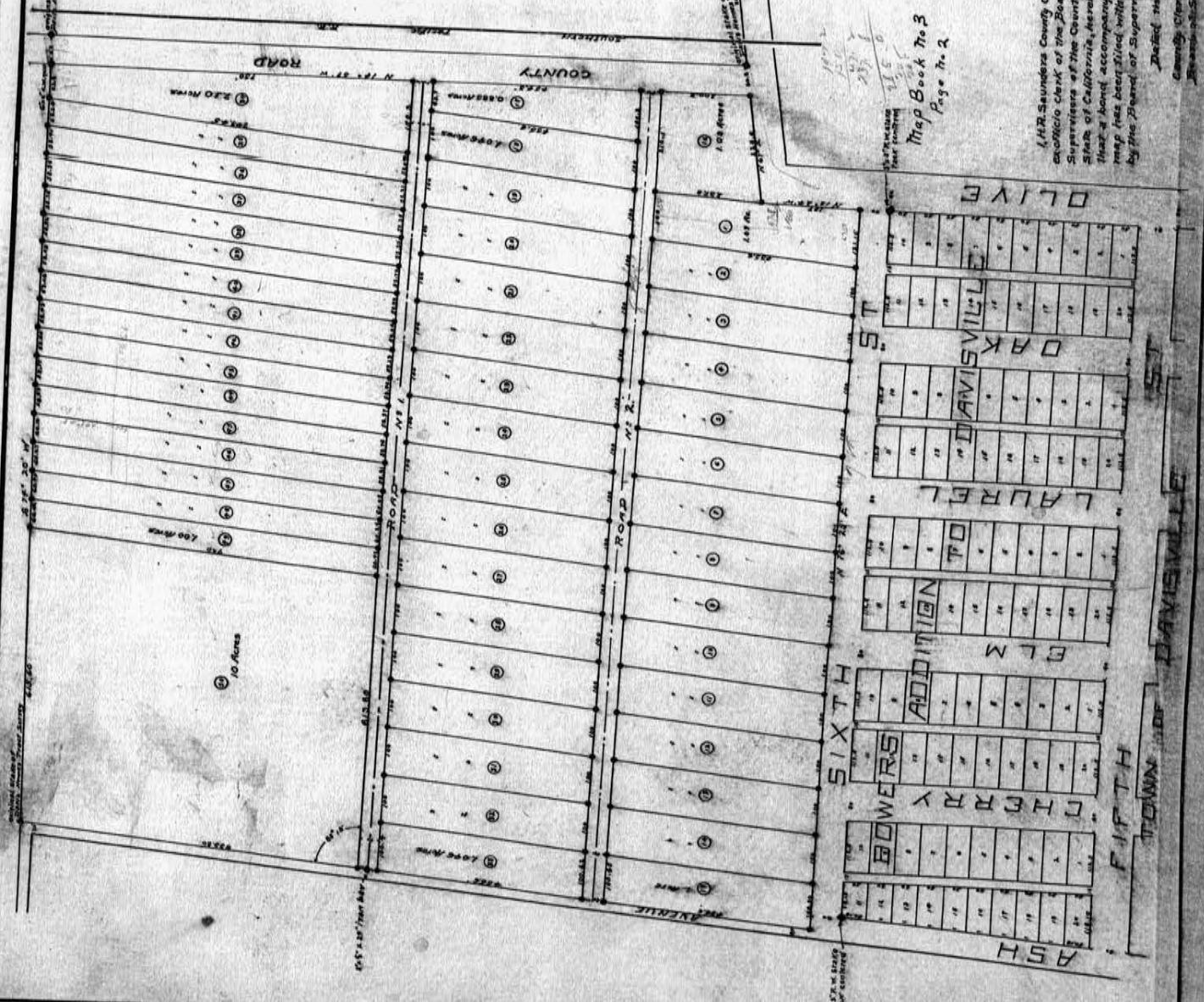
STATE OF CALIFORNIA }  
COUNTY OF YOLO } s.s.  
On this 30th day of August 1913 before me Forrest A. Blunt known to me to be the person whose name is subscribed to the within, and he duly acknowledged that he executed the same, and C. L. Richmond, cashier of the Bank of Yolo, the corporation that executed the within instrument, and he acknowledged to me that such corporation executed the same.

STATE OF CALIFORNIA }  
COUNTY OF YOLO } s.s.  
I, R. P. Wallace, auditor of Yolo county, state of California, hereby certify that there are no liens for unpaid taxes, either state or county against the tract or subdivision of land shown on this map in witness whereof I have hereunto set my hand and seal on this 30th day of August 1913.

*R. P. Wallace*  
Auditor of Yolo County

STATE OF CALIFORNIA }  
COUNTY OF YOLO } s.s.  
This is to certify that the Board of Supervisors of Yolo County has by resolution duly and regularly passed and accepted on behalf of the public, the roads dedicated to the public by the owners hereof, which roads are designated on the within plat.

Dated this 26th day of August 1913  
Chairman of Board of Supervisors  
*M. O. Still*  
Clerk of Board of Supervisors  
*H. B. Bowers*



(H. B. Bowers County Clerk, and officio Clerk of the Board of Supervisors of the County of Yolo State of California, hereby certify that a bond accompanying this map has been filed with and approved by the Board of Supervisors.

Dated this 26th day of August 1913  
County Clerk  
*H. B. Bowers*